



STATE OF THE ART HANGING SYSTEMS

BACK FRAME HANGING SYSTEM

► ARTITEQ BACK FRAME HANGING SYSTEM



Specialist in hanging

Artiteq is the specialist in hanging since 1995. A good hanging system is essential for displaying art and giving rooms a stylish look. A system isn't just about hanging: a professional system brings the place to opportunity to very easily create a different setting and therefore a new experience.

Artiteq is for professionals and consumers who want to be sure of a flexible and safe hanging system for art, frames and wall decorations. As a partner in hanging solutions, Artiteq can be found in the educational sector, the healthcare sector and in galleries and museums. Our innovative hanging systems are also used in offices and within commercial environments, to make an impact with information and decorations.

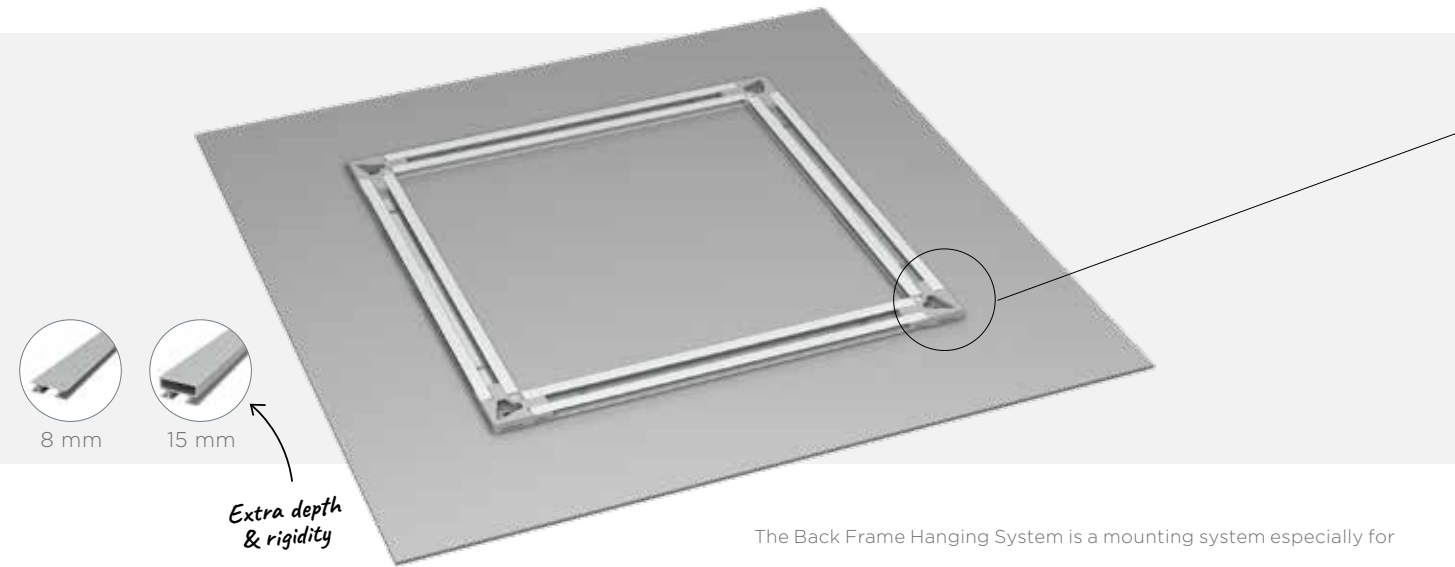
The Back Frame Hanging System is an addition to the Artiteq range, providing a solid and simple solution to hang printed panels

► ARTITEQ BACK FRAME HANGING SYSTEM

A **safe** and **solid** solution to hang printed panels.

Adds **depth** and **shadow** between panel and wall.

Adds **rigidity** to flexible panels made of aluminium (Dibond), forex or acrylic.



The Back Frame Hanging System is a mounting system especially for thin and flexible panels made of aluminium, forex or acrylic. It helps to stiffen the panel, while mounting is easy and safe. The leveling system provided by the Back Frame Power Corners is particularly convenient for the mounted panel allowing adjustment for the panel up to 6 mm. The panel will always be level without drilling new holes.

► BACK FRAME POWER CORNERS



1. WALL PROTECTION INCORPORATED

Wall protection is incorporated in the Power Corners.



2. LESS TAPE, BETTER LOAD CAPACITY



Power Corners enable equal weight distribution because of rigid fixing thanks to steel spring in square-cut profiles instead of mitre-cut profiles.

3. EASY HANGING: 3 OPTIONS

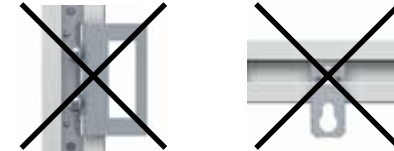
Power Corners provide 3 easy ways of hanging the printed panel:

Fixed (1), Secured (2) and Flexible (3).

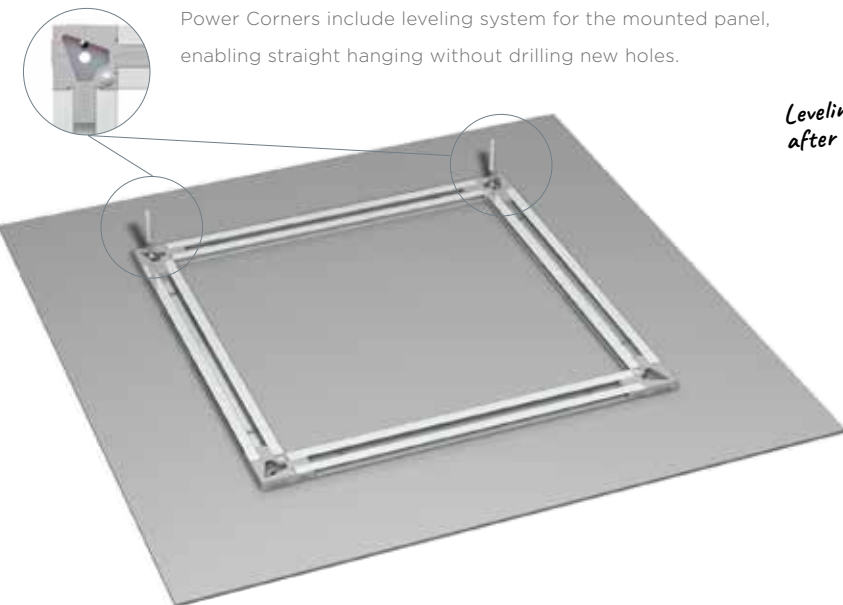


4. NO EXTRA ACCESSORIES NEEDED

The printed panel is hung using the Power Corners, no extra accessories



1 EASY HANGING 1 / FIXED

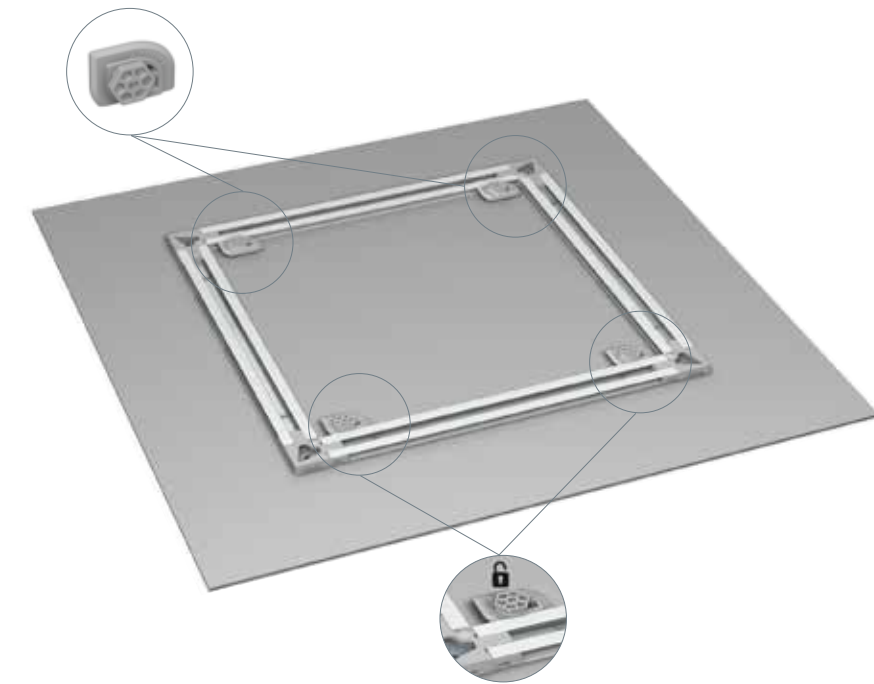


Leveling option after fixation



Power Corners include easy drilling tool indicating the precise positioning of the drill holes.

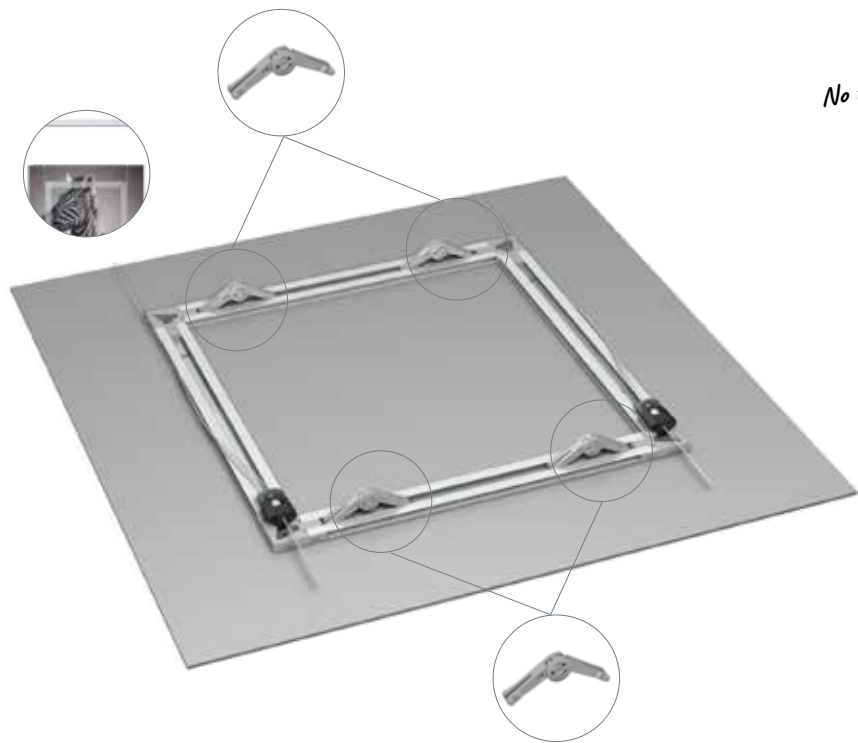
2 EASY HANGING 2 / SECURED



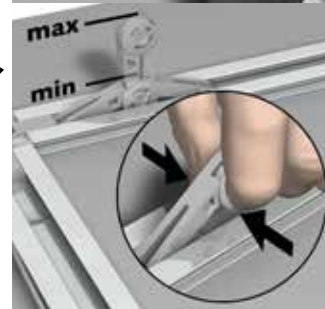
With 4 Back Frame Security Clips the panel can be fixed and secured to the wall. The frame hangs from the upper two Security Clips whereas the two lower Clips, once rotated with the help of the Security Key, lock the frame into place.

3

EASY HANGING 3 / FLEXIBLE



No tilting



Back Frame
Flex Bumpers

Back Frame Rail
15 mm

Combining the Back Frame Hanging System with a picture hanging system means flexibility and ease-of-use whilst decorating walls. The hanging wire is inserted in the Power Corner and picture hooks are placed in the lower Power Corners to ensure minimum tilting. To fully avoid tilting, we recommend using the Back Frame Flex Bumpers that will add more or less depth and stabilise the frame against the wall.

Click Rail picture
hanging system



WHY USE A PICTURE HANGING SYSTEM?

- Flexible wall decoration (always)
- Ease of use (hanging with no drilling)
- Sustainable building management (preserve walls)
- One-time investment & assembly



► **ARTITEQ** BACK FRAME HANGING SYSTEM



The Back Frame Hanging System is available in 8 mm and 15 mm profiles, both in the versions alu mill finish and silver anodised.

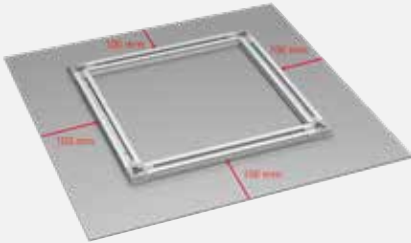
BACK FRAME HANGING SYSTEM



► **ARTITEQ** BACK FRAME HANGING SYSTEM

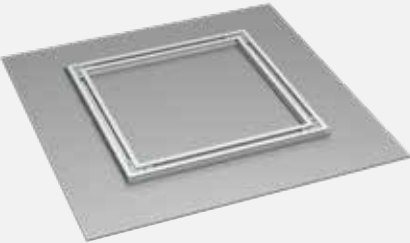
A

For the correct sizing and positioning of the Back Frame Hanging System, we recommend placing the profiles at 100 mm from each of the sides of the printed panel. For the glueing of the profiles to the back of the printed panels, we recommend using 3M tape (article number 05.16050).



B

The 8 mm and 15 mm profiles for the Back Frame Hanging System can also be mitre-cut. The profiles will fit with a large range of available accessories on the market.



C

We recommend using 3M tape (general advice 3M: 25 cm2/kg) for printed panels made of aluminium, hard-foam, forex, acryl and glass. The below table applies when Back Frame Hanging System profiles are applied at max. 100 mm from each of the sides of the printed panel (see A). The table applies for panels with a maximum total weight of 30 kg and a minimum size of 400 x 400 mm.



Material	Thickness	Tape required	For surface:
Dibond	3-6 mm	Single tape 12 mm	Up to 4 m²
Forex	3-5 mm	Single tape 12 mm	Up to 4 m²
Acryl	3-5 mm	Single tape 12 mm	Up to 4 m²
Glass	6 mm	Double tape 24 mm	Up to 2 m²

ARTITEQ UK DISTRIBUTOR
EYEVOLUTION LTD
UNIT S18 HASTINGWOOD BUSINESS PARK
WOOD LANE, BIRMINGHAM B24 9QR
UNITED KINGDOM

T +44 (0)121 360 3086
CONTACT@EYEVOLUTIONLTD.CO.UK
WWW.ARTITEQ.CO.UK

